



Digital Combination Master & Alarm Conversions

16 Signals | 32 Signals | 48 Signals | Oxygen | Vacuum | Medical Air
Nitrous Oxide | Nitrogen | Carbon Dioxide | Evacuation

Features

- Master & Area Alarm modules
- Modular Design
- Large LED Pressure Displays
- LED Trend Display
- User Adjustable Alarm Limits
- Universal Display (PSI, Bar, kPa)
- Reminder Alarm Function
- Meets CSA Z7396-1

Specifications

Class 1 DC Series, CSA certified, UL Listed, modular, microprocessor controlled Combination Master and Area Alarm to monitor source of supply equipment, main pipeline pressures and local area pipeline pressures of each medical gas.

Alarm panel to be complete with user programmable features including high and low alarm limits, reminder alarm function, Imperial or metric display, and zone and gas identification.

The base panel shall include Power On LED, Test, Silence and PSI/ kPa buttons, and status code display.

Each gas module display shall include LED status and trend indicators for Low / High / Normal conditions, continuous LED digital display of pressure or vacuum levels, and gas-specific colour-coded labelling in accordance with ISO and CSA Z7396.1-06.

Pressure transducers shall be labelled for intended gas service, and include gas-specific DISS inlet connections. Transducers shall include keyed plug-in circuit board connectors.

Inlet pigtails shall have gas-specific DISS check valves and shall be labelled for intended gas service. Pigtails shall be factory mounted to the backbox and shall be field relocatable for remote sensor installation.

Remote pigtails shall be located within 5,000' of alarm. Labels identifying remote sensor locations shall be permanently affixed to the alarm.

Area alarms shall communicate with the Class 1 Model MCP



BACS Panel, to allow connection to remote devices for identification and display of gas pressures throughout the hospital. Alarms that do not feature serial communications capability shall not be acceptable.

Each 16 signal module to include continuous green LED status indicators for each normal condition and continuous red LED status indicators for each abnormal condition. The master alarm to be capable of storing and displaying the most recent alarm conditions.

One pair of 16 to 26 ga. wires to be connected from each alarm terminal connector to each remote switch or dry contact to be monitored. All circuits to alarm on an open circuit.

Multiple Masters are to function independently of each other and to be connected in parallel only.

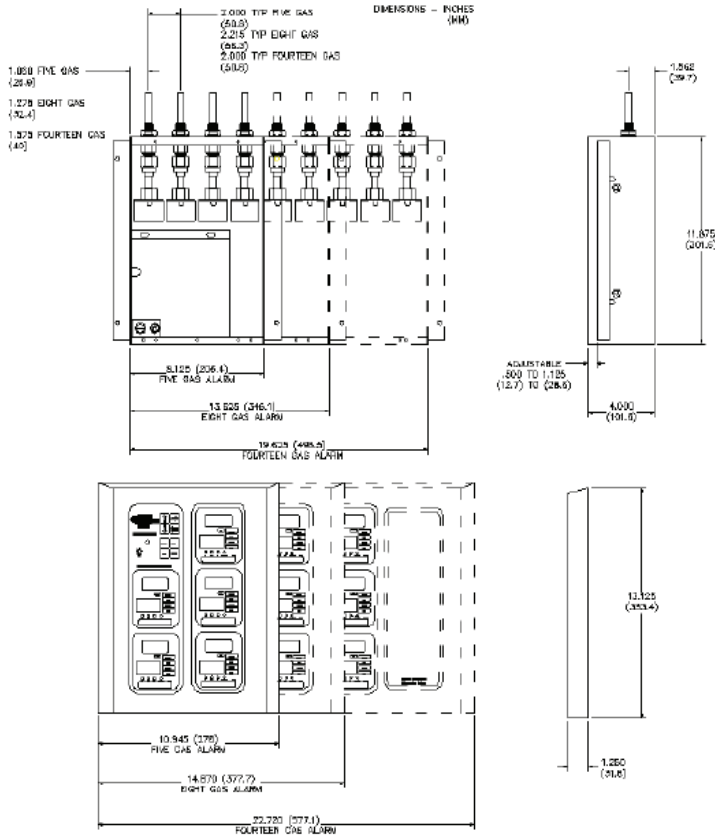
Master alarms are to be capable of communicating with Class 1 Master Alarms, Model MCP BACS Interface Panels, and other approved devices.



Digital Combination Master & Alarm Conversions

16 Signals | 32 Signals | 48 Signals | Oxygen | Vacuum | Medical Air | Nitrous Oxide | Nitrogen | Carbon Dioxide | Evacuation

Dimensions



Ordering Information

- 2-Gas, 16 Signals.....DCXX16
- 2-Gas, 32 Signals.....DCXX32
- 2-Gas, 48 Signals.....DCXX48
- 4-Gas, 16 Signals.....DCXXX16
- 4-Gas, 32 Signals.....DCXXX32

Replace each "X" with the following gas codes:

- O Oxygen
- V Vacuum
- A Medical Air
- N Nitrous Oxide
- T Nitrogen
- C Carbon Dioxide
- E Evacuation
- F Future
- S Scavenging (Anaesthetic Gas)

Accessories

- TNET-DW..... TNET Wireless Interface
- TNET-DWBASE..... TNET Wireless Base Station
- TNET-DE..... TNET Ethernet Interface
- TNET-SOFTWARE... TNET Software
- MD-100..... Remote Audible Buzzer
- DCR-X..... Gas Add-on Kit (Replace "X" with gas code)
- HW2-AC..... Standard Surface Mount Headwall Mount
- HW1-AC..... NeoAngle Surface Mount Headwall Mount

Examples

- DCOV16..... Oxygen, Vacuum, 16 Signals
- DCOV32..... Oxygen, Vacuum, 32 Signals
- DCOV48..... Oxygen, Vacuum, 48 Signals
- DCOVAF16..... Oxygen, Vacuum, Medical Air, Future, 16 Signals
- DCOVAN32..... Oxygen, Vacuum, Medical Air, Nitrous Oxide, 32 Signals